

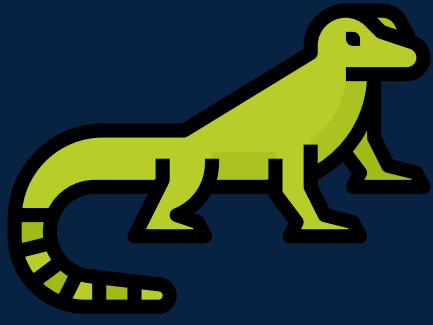


RESOURCE GUIDE FOR THE PLANET

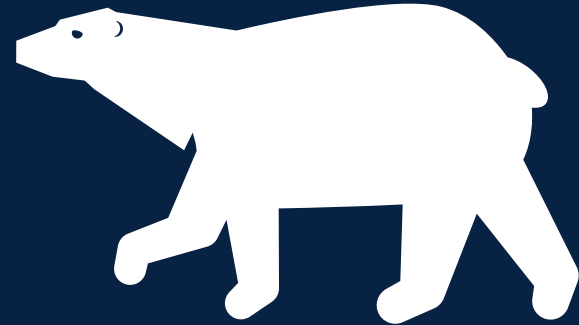
Dream in Green
TAKE CHARGE!



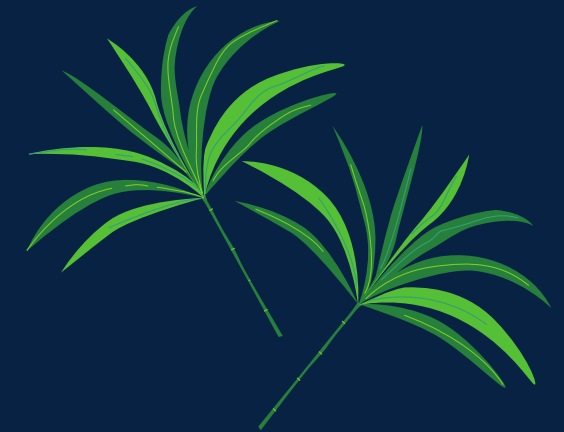
VIDEOS



Threat to the Amazon and its peoples



Melting of Arctic Sea Ice from 1984-2019



Hemp for a sustainable future



Climate Change 101



Diet impact on the climate



Ocean Health 360

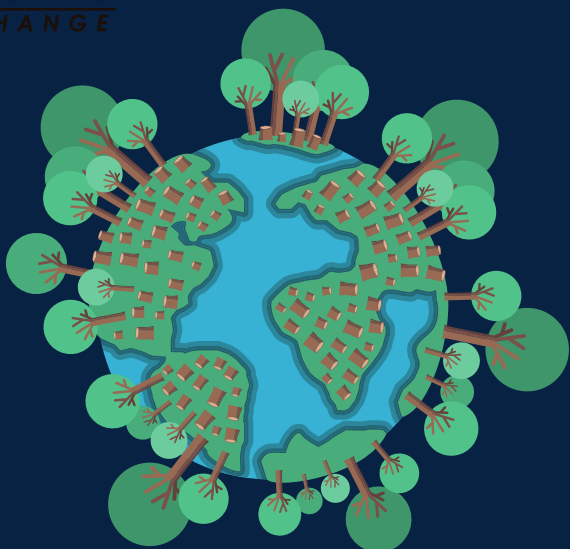


Sustainability at West Baptist Hospital

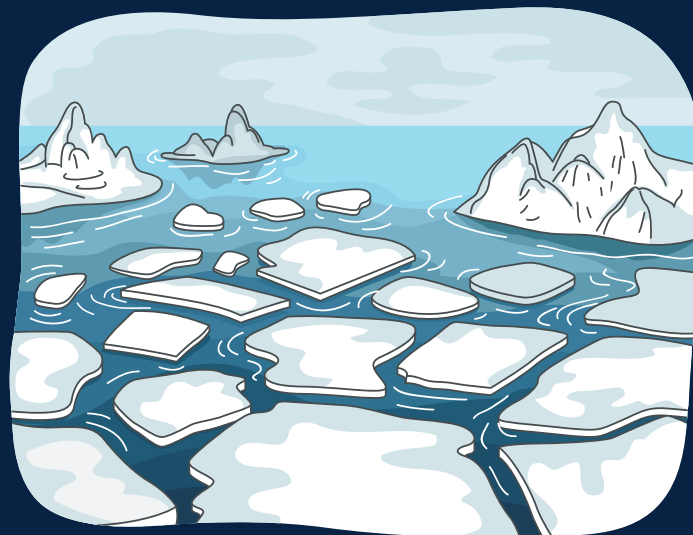


Bill Nye explains climate change

Climate CHANGE



Que es el cambio climático y que esta pasando a la planeta?



El derretimiento de los glaciares



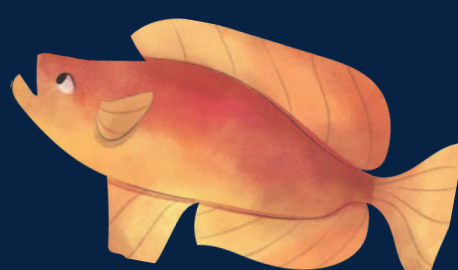
Desarrollo sostenible



United Nations | Las Naciones Unidas



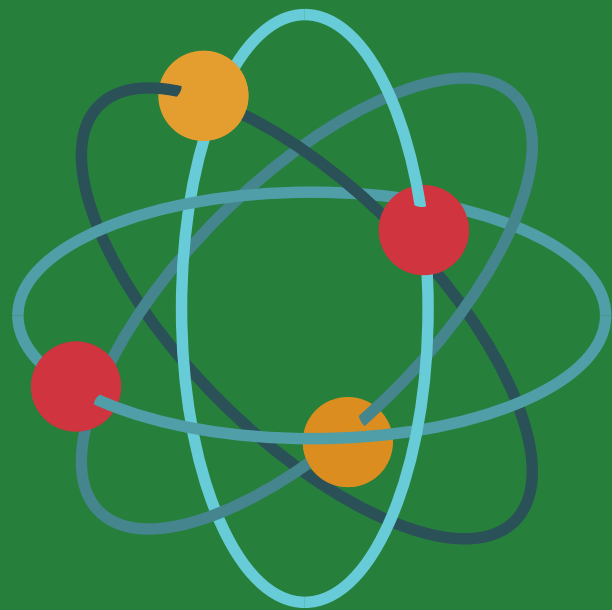
Cómo evitar el Cambio Climático



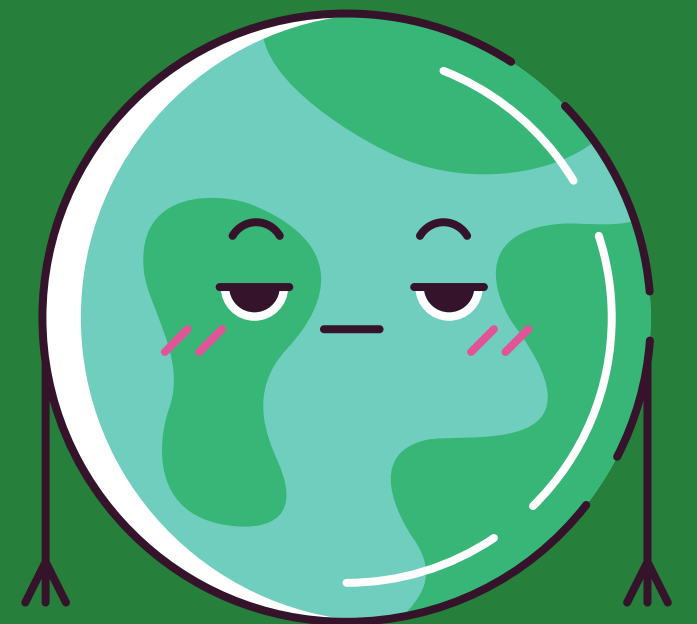
DOCUMENTARIES



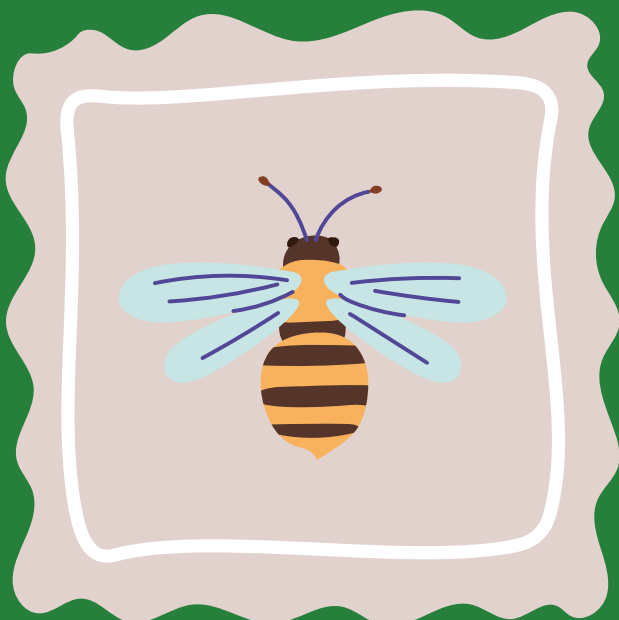
Stories of change



The science of climate change



A conversation between climate skeptics and a climate scientist



Save the bees



Environmental injustice



Vanishing freshwater



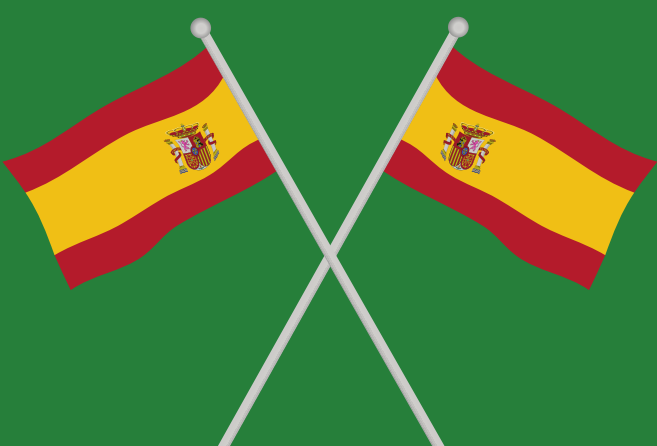
Lo que ya está ocurriendo debido al clima



Acción política para el planeta



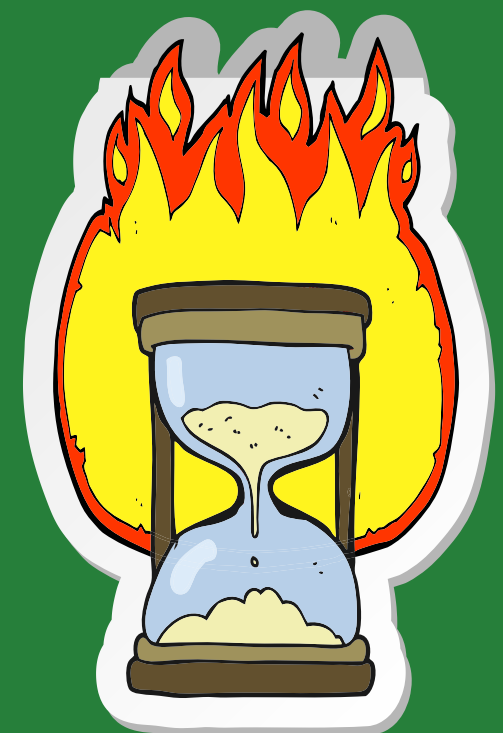
Arquitectura sustentable



El impacto en España



Ice on Fire | Hello en llamas



Antes de que sea tarde

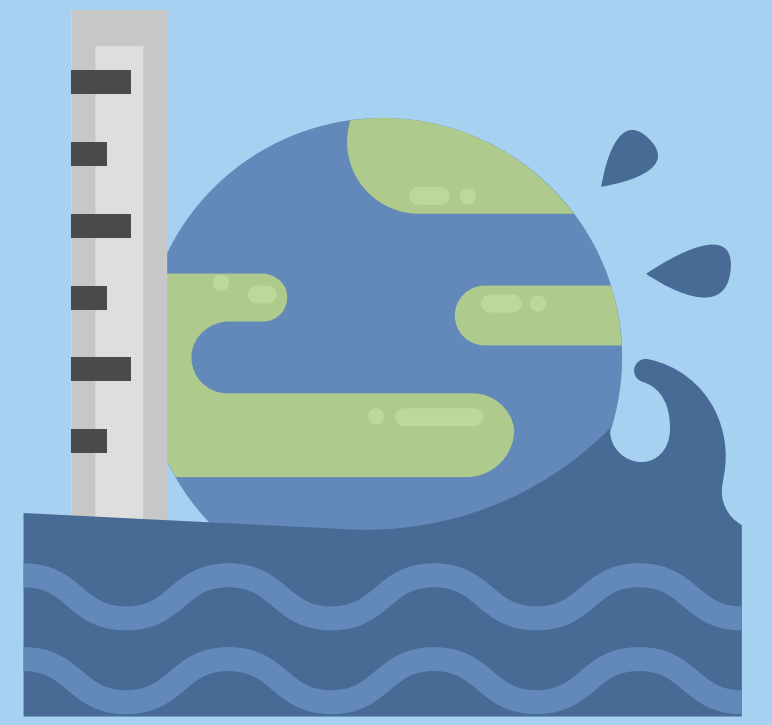
ARTICLES



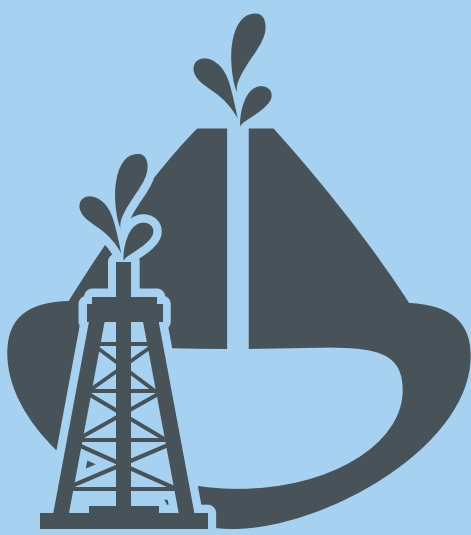
Biscayne Bay seagrass



Climate gentrification in Miami-Dade



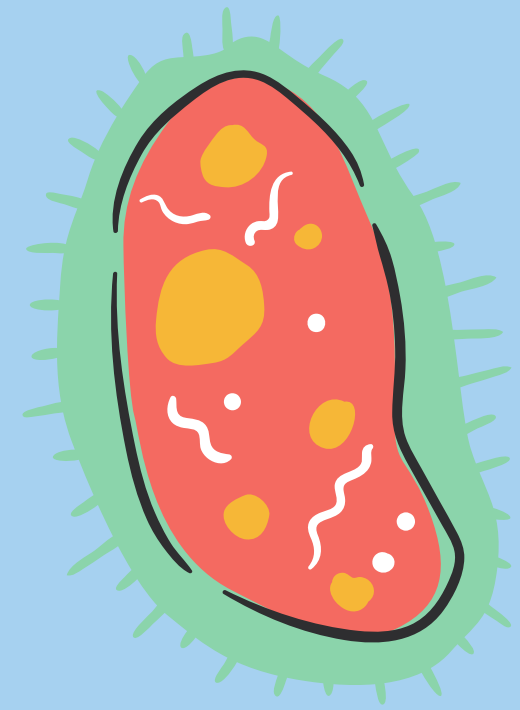
Sea level rise in Miami



Biscayne aquifer



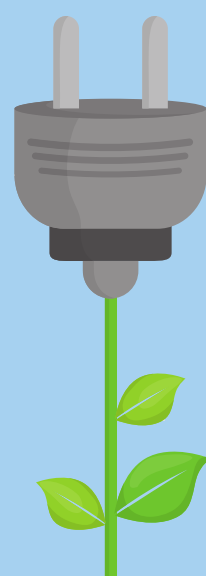
Real estate in Miami-Dade due to climate change



Covid-19 impacts on environment



La importancia de agua



Cómo ahorrar energía



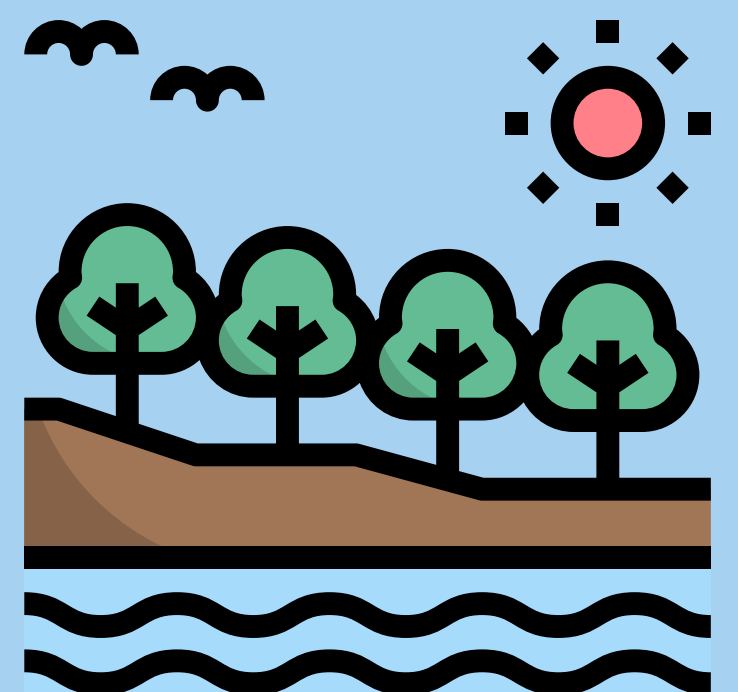
Miami Beach desapareciendo



5 cosas que puedes hacer



Sostenibilidad despues de COVID-19



El colapso de los ecosistemas

PODCASTS



Women and climate change



Climate deadline



Air quality



How the music industry can reduce their impact



The impact of pandemic on Earth



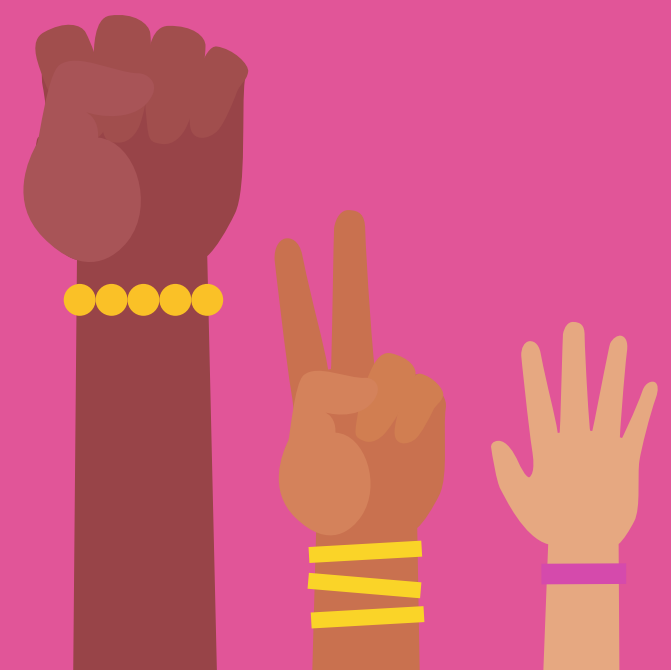
Impact in Asia-Pacific



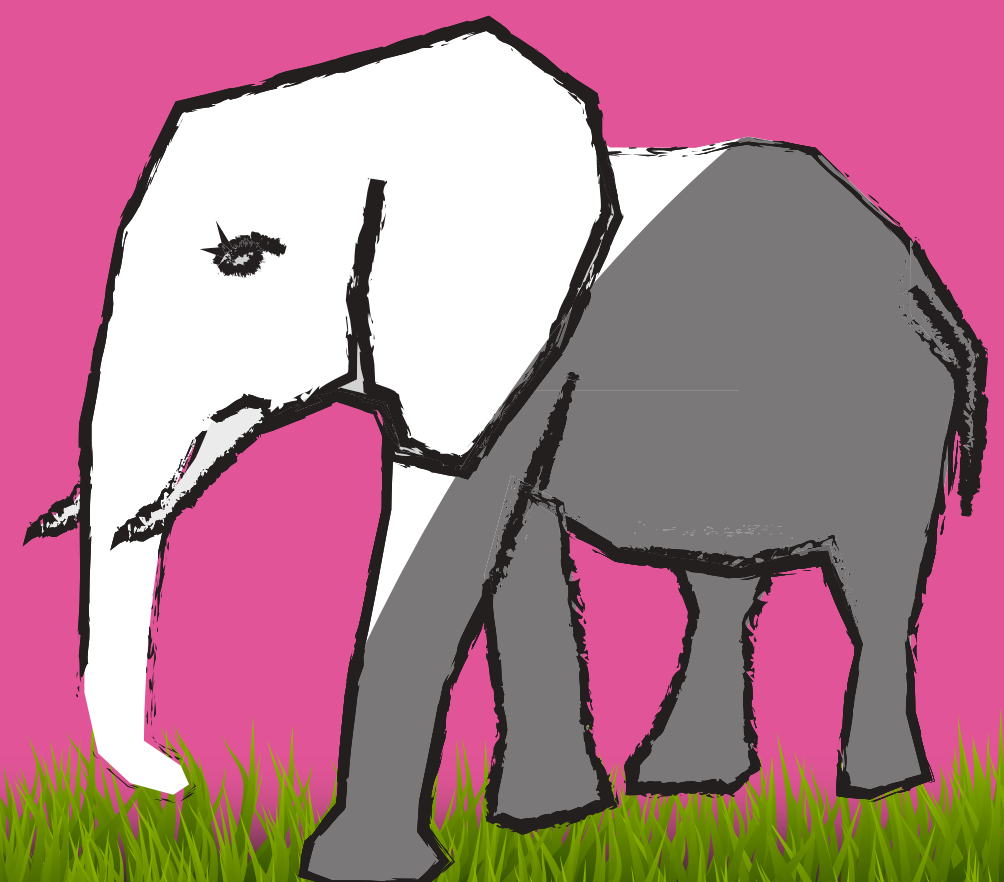
Climate action



Effect on education



Youth action



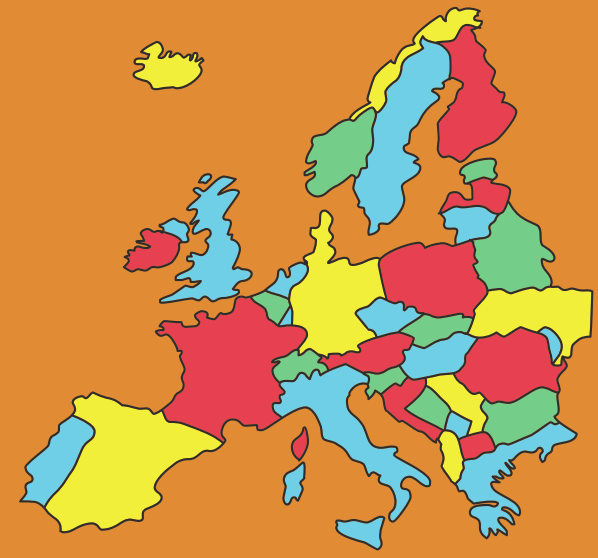
MISC



Last Hours



Home



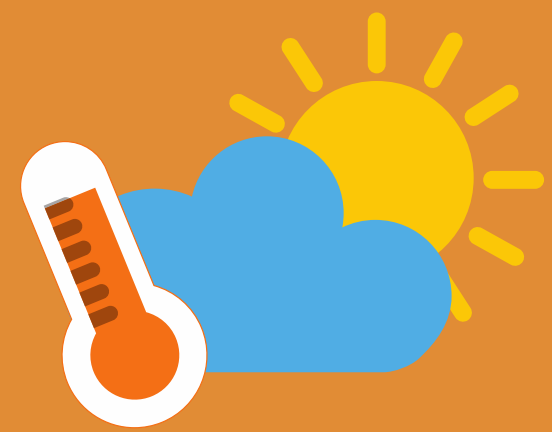
Europe and climate change



Surging Seas in Miami



Eco friendly search engine



Difference in degree changes

